

THE LOOM, LEIGH

Salmon Harvester

Completion: September 2011

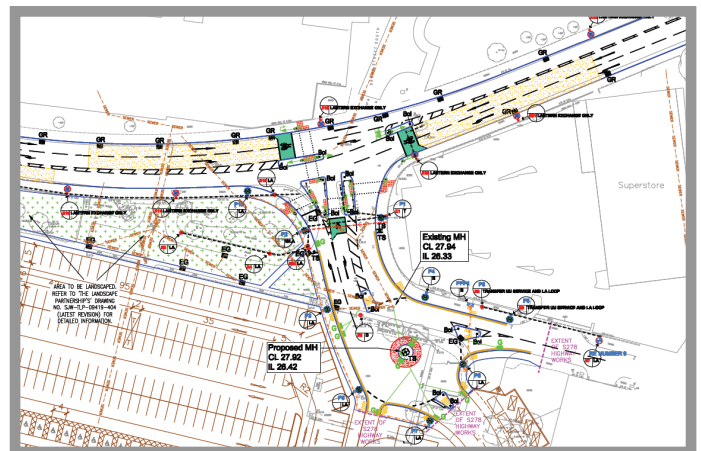
Scheme Proposals:

SCP was commissioned by London-based developer Salmon Harvester to provide full highways support for their mixed-use redevelopment scheme for the former Quinn Radiator Works in Leigh, Wigan. The site, now known as The Loom comprises a 10,393m² Tesco supermarket with a 6-pump PFS and 7-screen Cineworld multiplex. There are also four restaurant units and parking for 800 cars.



SCP's Role:

SCP was involved at the outset for the due-diligence exercise and early masterplanning. Complications with the proposed Leigh Guided Busway proposals were overcome and all issues falling out of the Transport Assessment were satisfactorily resolved. SCP were retained to discharge all highway-related planning conditions.



SCP undertook the detailed design of the agreed off-site S278 works to Derby Street and Spinning Jenny Way, securing technical approval with the local highway authority.

We prepared the contract documentation for the highway works and liaised closely with the appointed main contractor, McLaren, and lead architect, McCurdy Russell, throughout the course of the contract to ensure the deadline for store handover to Tesco was met.

Contact: Jim Budd